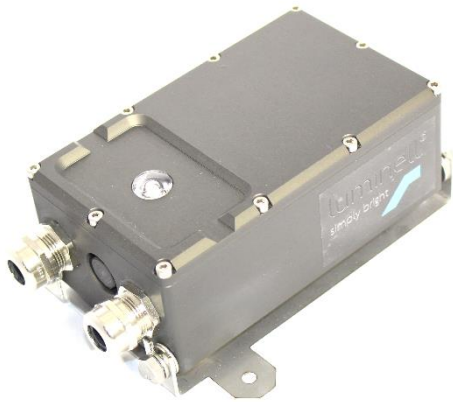


EML Series - Emergency LED Light

Water & weather proof LED based light with battery backup function

Specification

Input voltage range:	90-260 Vac (~10W)
Intensity	AC supply: ~ 1000 lm, Battery supply: ~ 400lm to ~ 1000 lm, depending on set backup time
Battery type:	25V 600mAh Ni-Mh (Total Energy content 15Wh)
Battery lifetime:	5 years (from production data)
Battery shelf time:	1 year (storage time without charge – <i>provided 100% full when stored</i>)
Temperature range:	Storage: -30°C to 70°C; Active: -20°C to 55°C
Cable entry:	2x M20*1.5 cable glands. Internal cable-bay for daisy chain supply
Wire numbering:	#1: L1 – Light ON/OFF. #2: L2 – Constant Charge Power. #3: Neutral Ground Connections in Junction box using a M4 bolt
Materials:	Dark Gray Anodized aluminium
Weight:	2,5 kg
Dimensions:	199 x 100 x 76mm (see General product drawing)
Ingress protection:	IP67
Standards:	MIL-461F (Radiated and Conducted Emissions)



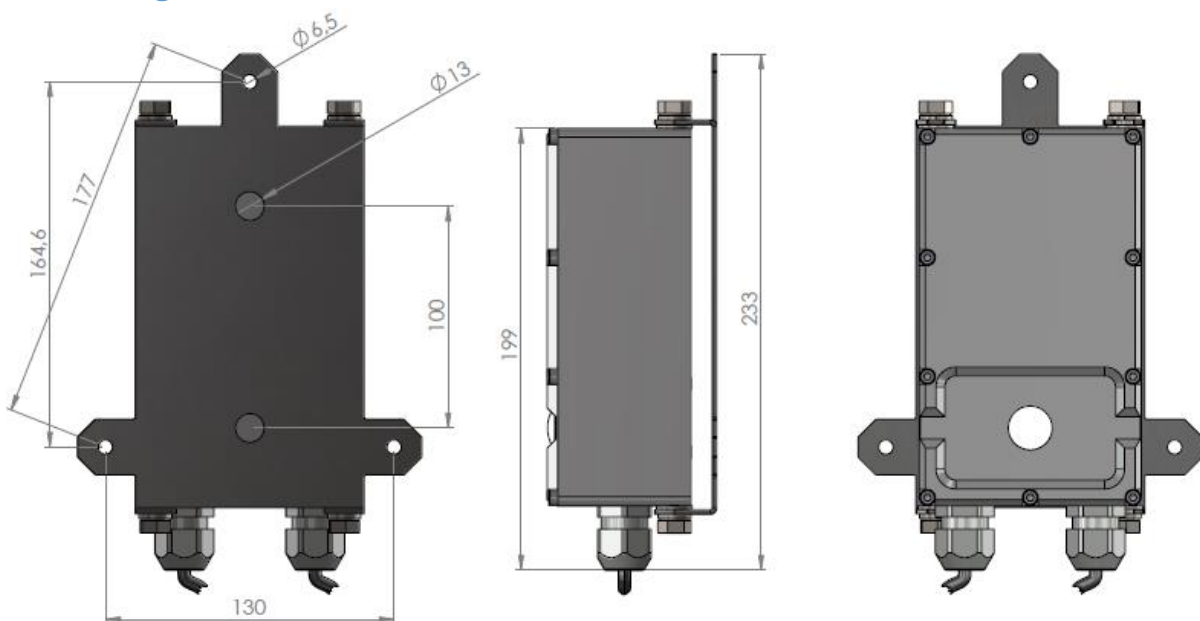
Ordering Information

Product Description	Backup time (hours)	Beam Angle	Product Nr.
EML Emergency LED light	3	Wide	L0278-1
	1,5	Wide	L0278-2
	1,5	Medium	L0278-3
EML 22,5 deg tilt forward Bracket Acc.	-	-	L0268
EML Battery pack (25V 600mA Ni-Mh)	-	-	L0282

Battery Backup Function

- Enable battery function: Battery back-up function is enabled first time the unit is connected to Vac power (N and L2) for more than 30 seconds.
- Disable battery function: When the battery backup is running, the light can be turned OFF by placing a powerful magnet at “magnet point” on side of unit.
- Charge function: Internal charger will charge battery to 75% after 10 hours with Vac power connection. Trickle charge function will take over hereafter. (1 minute reduced charge each 30 minute).
- Battery protection: Internal cut-off function will protect battery from deep-discharge damages.

Mounting



Battery Exchange

Remove the front. Disconnect two cable connections. Unscrew the two bolts holding the battery back in place. Replace battery.



Tilt forward Accessory

This accessory will add a forward tilt of 22,5 deg. Product nr. L0268

